

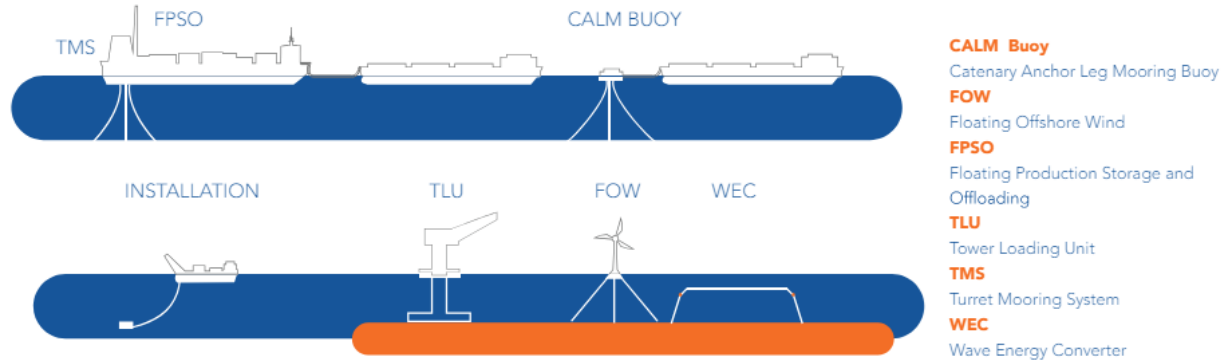


DeepWind: Steel Floating Substructures

18 September 2024

Cian Conroy – Head of Development

SBM OFFSHORE ACTIVITIES



1st
Global FPSO player
with standardised lifecycle
product offering

US\$4.5bn
Directional revenue

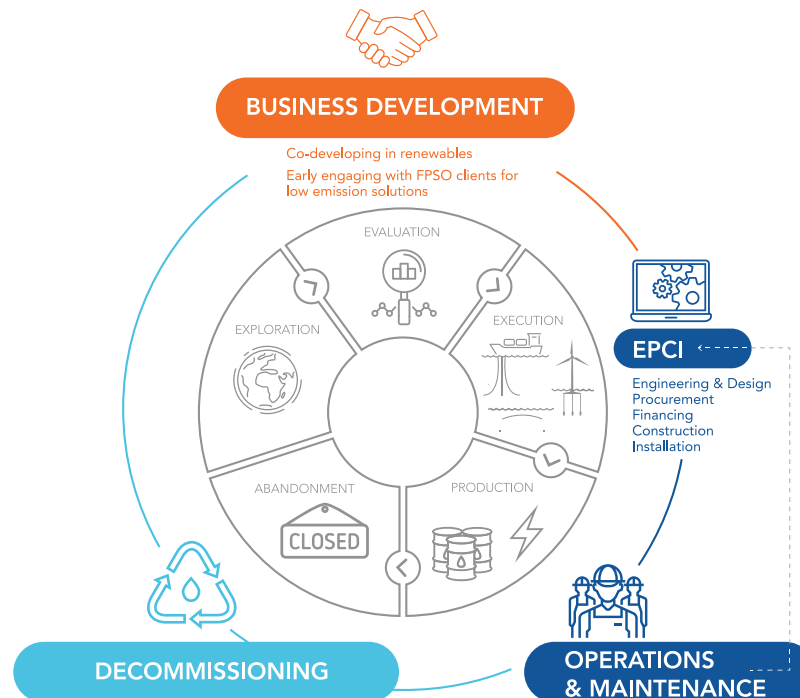
~7,400
Employees

>50 FPSOs
Delivered and 17 units
operational

>385 years
Cumulative operating
experience

~98%
Production uptime with
operational excellence key
for clients

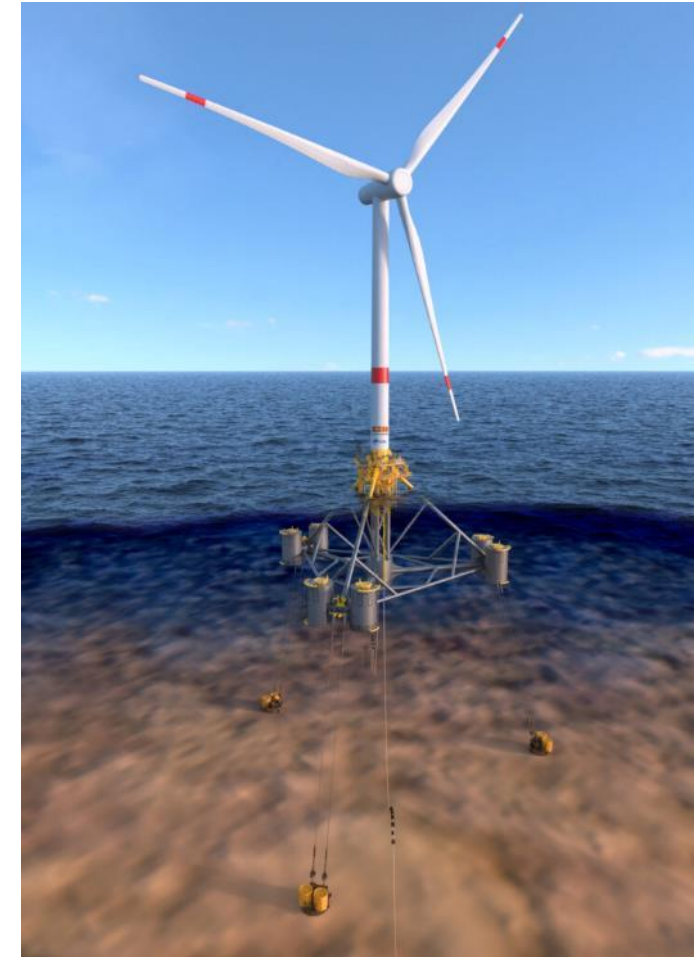
SBM Offshore is a top-tier offshore contractor specialized in delivering complex floating structures for the energy industry





Provence Grand Large

- First “pre commercial” floating offshore wind farm in France
- First project worldwide to be installed using tension leg mooring technology
- First floating wind project to be financed by commercial banks
- 3 Siemens-Gamesa SG 8.4-154 DD
- Water depth: 100M
- 17 kilometers from the coastal town of Port-Saint-Louis-du-Rhône
- SBM deliver design and EPCI of floating platform and mooring system





- SBM responsible for EPCI of PGL turbines
- Recommissioned yard in Fos Sur Mer in France
- Three units manufactured with global supply chain, final assembly in France





Delivering commercial scale
projects

Readiness Level - Wind Farm EPCI framework

Floaters & mooring supply



ERL



WTG supply and integration



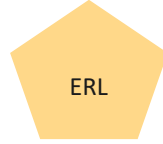
ERL



Harbour Infrastructure



ERL



Harbour Operations



ERL



FOWT installation



TRL
ERL



IAC Supply



TRL
MRL

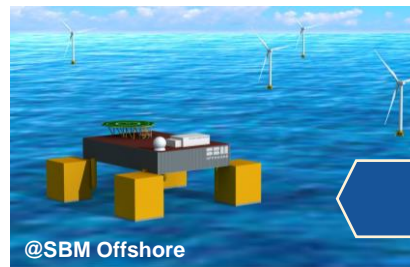
IAC Installation



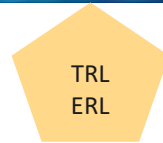
TRL
ERL

ERL

(Floating) Substation



@SBM Offshore



Export & Onshore substation



ERL



Wind Farm O&M



TRL
ERL



- Prior packages selection requires validation of **Technology** readiness, **Manufacturing** readiness of all components and **Execution** readiness of certain operations (Developer and/or Contractor process)

- Developer role to manage the various packages and interfaces, requiring a self assessment of its **contracting** and execution readiness

Legend : TRL = Technology Readiness Level
MRL = Manufacturing Readiness Level
ERL = Execution Readiness Level

Set to be among the lowest LCOE FOW projects in the world

NCW1	1 GW
NCW2	400 MW
Water depth	100-150m
Distance to shore	9-20km
Hs_50y	5m
Avg wind speed (150m)	10.5m/s

- 1,400MW project in 2 sites (1,000 + 400)
- Development work started in 2021.

Recent activities – 2 years development work completed

1. 14 out of 24 months aerial surveys completed
2. Public Consultation completed
3. Execution scenario for deployment completed

Project characteristics

- The project size is tailored to provide the bulk of the Northern Ireland's offshore wind energy targets
- The wind resource, mild sea conditions, and execution opportunities in Northern Ireland make North Channel Wind a sweet spot for floating wind leading to a world-low LCOE

Regulatory framework

- Northern Ireland benefits from the proven UK framework and its track-record of offshore wind projects. Policy needs to be fully implemented
- Awaiting leasing round from The Crown for Northern Ireland



Thank You

Cian.conroy@sbmoffshore.com

